



Aperto 15
TOMIYASU Yuma
The Pale Horse

2021.10.30 (Sat) -
2022.3.21 (Mon)

New Installation by Noted Emerging Artist TOMIYASU Yuma
Space Beckons with New Perceptual Experience of a Childhood Dream

Exhibition Title	Aperto 15: TOMIYASU Yuma The Pale Horse
Period	Saturday, October 30, 2021 – Monday (national holiday), March 21, 2022
Closed	Mondays (except November 1, November 22, 2021 and January 3, January 10, March 21, 2022); November 24; December 29 – January 1; January 4; January 11
Hours	10:00-18:00(until 20:00 on Fridays and Saturdays)
Venue	21st Century Museum of Contemporary Art, Kanazawa, Long-term Project Room
Admission	Free
Organized by	21st Century Museum of Contemporary Art, Kanazawa [Kanazawa Art Promotion and Development Foundation]
In Cooperation with	Slacktide Co., Ltd, JIYUDIZAI, Munejyu Co.,Ltd
Inquiries	21st Century Museum of Contemporary Art, Kanazawa Tel: +81-(0)76-220-2800

Media Contact

21st Century Museum of Contemporary Art, Kanazawa

Exhibition Curator: TATEMATSU Yumiko
Public Relations Office: ISHIKAWA Satoko, SAITO Chie, OCHIAI Hiroaki
1-2-1 Hirosaka, Kanazawa, Ishikawa Prefecture, Japan 920-8509
Tel: +81-(0)76-220-2814 Fax: +81-(0)76-220-2802
<https://www.kanazawa21.jp> E-mail: press@kanazawa21.jp



**About
the Exhibition**

TOMIYASU Yuma (b. 1983) has presented many installations featuring spatial effects that blur distinctions between real and unreal, with themes such as psychic and paranormal phenomena and the world of dreams. The unique world of her work disrupts the perceptions of the viewer, stimulating the senses – including at times the mysterious sixth sense – heightening awareness of the uncertain and invisible that we tend to avoid, and questioning the essence of perceptual experience. Tomiyasu's new installation created for this exhibition was inspired by a dream she had as a child, and the setting is a hut that appeared in that dream. The horse in the painting hanging on the wall of the hut was inspired by the Pale Horse, ridden by a knight symbolizing Death, in the Book of Revelation in the New Testament of the Bible. The work beckons the viewer who enters the gallery toward a strange and fantastical experience in which reality and fiction intersect. In recent years, the experientially-based world of the artist's works, which takes an increasingly dynamic approach to presentation of the traditional medium of painting and incorporation of the spaces it occupies, creates novel opportunities for viewers to encounter what has previously gone unseen.

**Artist's
Statement**

Being in a borderline zone, undetermined and unclear, makes all of us uneasy. However, the world is full of things we do not understand, including psychic phenomena, paranormal phenomena, and the world of dreams. As we live our lives, we block out those unknown things that provoke anxiety, but I believe something vital may lurk within these unexplained things and phenomena. I have thus far presented many interactive installations with themes such as spirits and dreams, because I find value in having the viewer experience things not only through vision but through all the five senses, and sometimes the sixth.

The work exhibited here, titled *The Pale Horse*, is based on a dream I had in childhood. There was a dilapidated hut with a picture hanging on the wall. The image could have been a scene that we all share in common at the level of the collective unconscious. As a young child in that dream, I suddenly entered the picture that hung in the hut. It was the kind of experience that sweeps the rug out from under you, as the boundary between the world you thought you inhabited and the world of imagination melts away, and it is this experience I aim to express.

The Pale Horse appears in Chapter 6, Verse 8 of the Book of Revelation in the New Testament of the Bible. Its rider is a symbolic representation of Death, and following close behind is Hades. Inside the hut there is a sound at the frequency of 19Hz, which is inaudible to humans, but is said to induce anxiety because the frequency can be sensed by the body, though not heard by the ears. Also, whether or not there is any truth to this, it is a frequency commonly associated with seeing ghosts. My hope is that my work will offer viewers opportunities to engage with the borders of the known world, and turn their eyes toward the unknown.

TOMIYASU Yuma

**Exhibition
features**

Reality and Fiction Intersect in a Space Embodying a Childhood Dream

The exhibition was inspired by a dream TOMIYASU had as a child, and the setting is a hut that appeared in that dream. In the dream, a poster depicting a North American landscape hung on the wall of a hut, and the artist clearly remembers how, while she was looking at it, she at some point found herself inside the picture, and the boundaries of the world became blurred and ambiguous. For this exhibition, the artist has recreated the space of this dream that made such a powerful impression, and beckons the viewer into a fantastical experience, like floating in a zone between reality and fiction.

Neither Animal nor Spirit: In a Space Inspired by the Pale Horse of the Book of Revelation

TOMIYASU's painting *The Pale Horse*, shown in the hut, was inspired by the steed of the fourth Horseman of the Apocalypse, which appears in the Book of Revelation (Chapter 6, Verse 8) at the end of the New Testament. In Revelation, the fourth Horseman symbolizes Death and, accompanied by Hades, has the power to control a quarter of the earth. In this exhibition, the pale horse in the painting silently awaits the viewer, accompanied by an inaudible 19Hz sound and an uncanny presence that is neither animal nor disembodied spirit.

An Artist Uniquely Applying Diverse Media to Fuse Painting and Space

A central theme of TOMIYASU Yuma's practice is to create, with diverse media including painting, installation, and video, indefinable and fantastical spaces where reality and unreality merge indistinguishably. After studying Fine Art at the University of the Arts London and earning a Ph.D. in Fine Art from Tokyo University of the Arts, she has been a highly active Japan-based artist, who in recent years has adopted an increasingly dynamic approach to presentation of the traditional medium of painting and incorporation of the spaces it occupies. The world of her works creates novel opportunities for viewers to perceive what has previously gone unseen, experienced not only through vision, but through all the five senses and through intuition resembling a sixth sense.

**About the
“Aperto” Series**

The exhibition series “Aperto” introduces up-and-coming young artists in a solo exhibition format. As an art museum actively engaged with the contemporary world, 21st Century Museum of Contemporary Art, Kanazawa looks closely at new trends now in the process of forming. Artists and curators collaborate in creating occasions for exhibiting works and act as an intermediary between today’s creation and that of the future. This exhibition series looks at individual artists who, although having little experience with solo or important group exhibitions at art museums, possess sufficient creative motivation to command a solo exhibition and who are expected to make a significant impact in the future. Artists are selected without regard for their nationality or expressive media by the curator at 21st Century Museum of Contemporary Art, Kanazawa. Note: “Aperto” is Italian for “open.”

**About
the artist****TOMIYASU Yuma**

Born in 1983 in Hiroshima and raised in Tokyo. After earning a BA with honors and an MFA at Chelsea College of Arts, the University of the Arts London, she received a Ph.D. in Fine Art (oil painting) at Tokyo University of the Arts. In recent years, she has presented many interactive installations that expand the scope of painting as a mode of visual expression. Major solo exhibitions include *guest room 002: Yuma Tomiyasu*, *Rooms of Absence/Presence: Iconography of Spirit, Dream and Unconsciousness* (Kitakyushu Municipal Museum of Art, Fukuoka), *shiseido art egg 12: Yuma Tomiyasu*, *Obsessed With Dreams* (Shiseido Gallery, Tokyo) (both 2018), *Making All Things Equal / The Sleepwalkers* (Art Front Gallery, Tokyo) (2019), and KAAT Exhibition 2020: *Yuma Tomiyasu | Shadows of Wandering* (KAAT Kanagawa Arts Theater, Kanagawa) (2021). Tomiyasu was shortlisted for the Jerwood Drawing Prize 2010 (London) and awarded a special prize at the 21st Taro Okamoto Awards for Contemporary Art (Kanagawa) in 2018, among other awards.

<http://www.yumatomiyasu.com>

**Related
program**

Information will be posted on the museum website at a later date.

**Images for
Publicity**

Images 1–6 are available to the press from the Museum's Public Relations Office (press@kanazawa21.jp) based agreement to the following conditions.

< Conditions of Use >

Photos must be reproduced with the credit and caption given.

Please refrain from cropping. During layout, please avoid laying type (caption or other) over the photo.

Please send proofs to the public relations office to verify information.

Please send a publication (paper), URL, DVD or CD to the museum for our archives, afterwards.



TOMIYASU Yuma, *The Pale Horse*, 2021
©Yuma Tomiyasu
photo : TOMIYASU Yuma



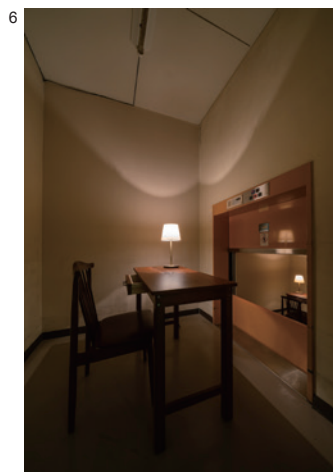
TOMIYASU Yuma, *The Pale Horse*, 2021
©Yuma Tomiyasu
photo : NOGUCHI Hiroshi
Courtesy of ART FRONT GALLERY



TOMIYASU Yuma, *Making All Things Equal*, 2019
Installation view of the Art Front Gallery
©Yuma Tomiyasu
photo: KATO Ken



TOMIYASU Yuma, *Shadows of Wandering*, 2021
Installation view of the KAAT, Kanagawa Arts Theatre
©Yuma Tomiyasu
photo : NISHINO Masanobu



TOMIYASU Yuma, *The TOWER (Descension To The Emerald City)*
©Yuma Tomiyasu
photo: KATO Ken